

MICROSOFT
TRAINING
AND CERTIFICATION

Microsoft Official
Curriculum

Job Aid: Microsoft Windows XP Professional Pre- Installation Checklist



Information in this document is subject to change without notice. The names of companies, products, people, characters, and/or data mentioned herein are fictitious and are in no way intended to represent any real individual, company, product, or event, unless otherwise noted. Complying with all applicable copyright laws is the responsibility of the user. No part of this document may be reproduced or transmitted in any form or by any means, electronic or mechanical, for any purpose, without the express written permission of Microsoft Corporation. If, however, your only means of access is electronic, permission to print one copy is hereby granted.

Microsoft may have patents, patent applications, trademarks, copyrights, or other intellectual property rights covering subject matter in this document. Except as expressly provided in any written license agreement from Microsoft, the furnishing of this document does not give you any license to these patents, trademarks, copyrights, or other intellectual property.

© 2001 Microsoft Corporation. All rights reserved.

Microsoft, BackOffice, MS-DOS, Windows, Windows NT, Active Directory, ActiveX, BackOffice, DirectX are either registered trademarks or trademarks of Microsoft Corporation in the U.S.A. and/or other countries.

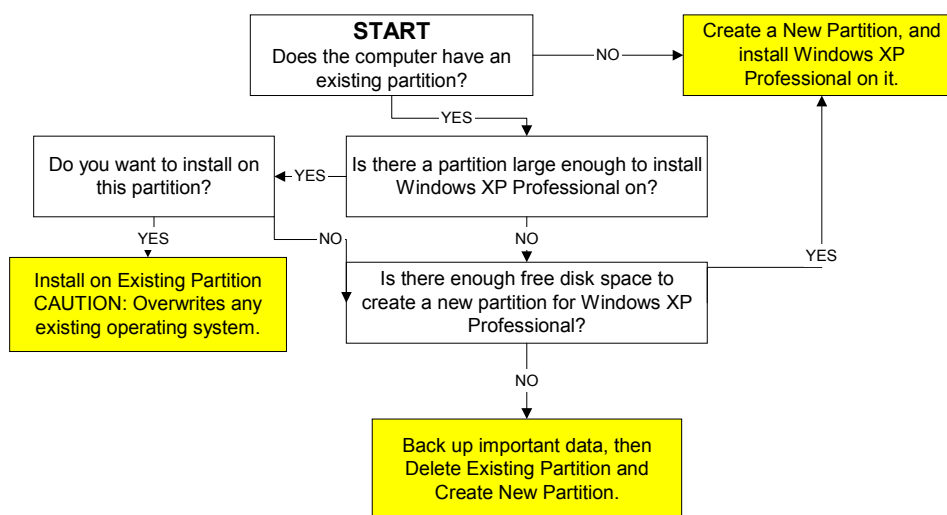
Other product and company names mentioned herein may be the trademarks of their respective owners.

Use this checklist to help make your planning decisions for installing Microsoft® Windows® XP Professional. Put a check in the appropriate column.

System requirements	Meets requirements	Needs upgrade
CPU is at least Pentium 2, 233 MHz		
64 MB to 4 GB RAM		
Hard disk is at least 1.5 GB		
Hard disk has at least 650 MB available for partition (1.5 GB recommended)		
Monitor has VGA or better resolution		
Keyboard and mouse available		
12x CD-ROM available for CD installation		
Network connectivity available for Installation over network		

Hardware compatibility	All compatible	Hardware that needs an upgrade
All Hardware compatible per winnt32/checkupgradeonly		
All hardware appears on Windows XP HCL		

Use this decision tree to make disk partitioning decisions, then record decision in table on following page.



Disk partitioning decision	Record partition size here
New partition on unpartitioned disk	
New partition on partitioned disk	
Install on existing partition	
Delete existing partition to create disk space, and then create new partition	

Use the NTFS file system unless accessibility needs require you to use FAT or FAT32

File system considerations	NTFS required	FAT or FAT 32 required
File and folder level security required	X	
File compressions required	X	
Per-user disk space control required	X	
Transparent file encryption required	X	
Must gain access to data on Windows XP partition with Microsoft Windows 95 or Microsoft Windows 98 operating systems		X FAT or FAT32
Must run applications that are not Windows XP-compatible		X FAT or FAT32 (dual boot configuration)
Must run Microsoft MS-DOS®-based applications		X FAT only

Use this chart to make networking decisions. If any one condition warrants joining a domain, do so.

Networking considerations	Join a workgroup if:	Join a domain if:
Authentication and security	Performed on individual computers	Performed in a central database
Administration of users	Performed on individual computers	Performed in a central database or performed remotely
Number of computers to be included on the network	Fewer than 10 computers and no other conditions warrant a domain	More than 10 computers
Resources	Located on individual computers	Centrally located